

Apex Shelves for PE Elan

Greater work area for sample introduction systems

Increase the work area and make the use of sample introduction systems more convenient with these add-on shelves for PerkinElmer Elan ICPMS. Ideal for use with the Apex inlet system.

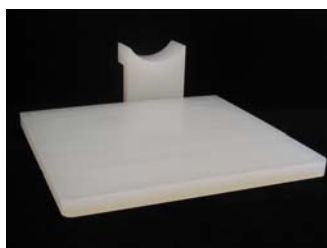
- ▲ Positions the Apex system to align with ICP torch
- ▲ Attaches to the Elan using manufacturer's contact points
- ▲ Quick and easy to install
- ▲ Provides sturdy work area capable of supporting heavy loads
- ▲ Constructed from chemically resistant polypropylene



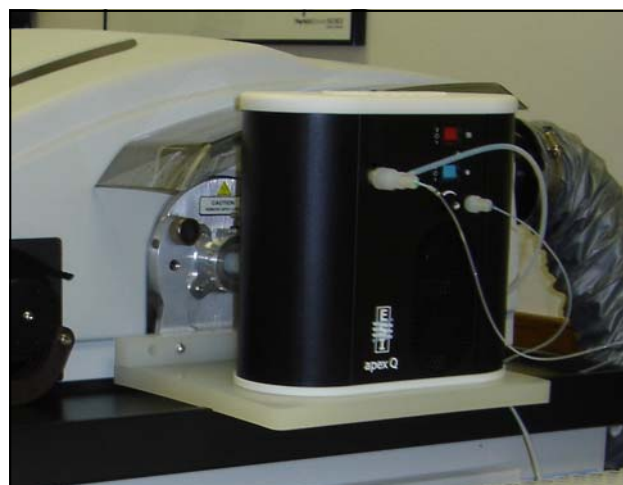
Apex Shelf for Perkin Elmer Elan with cassette mount torch



ES-2999-5421 Shelf for PE Elan with cassette torch (newer than mid-2005)



ES-2999-5431 Shelf for PE Elan with bayonet torch (built before mid-2005)

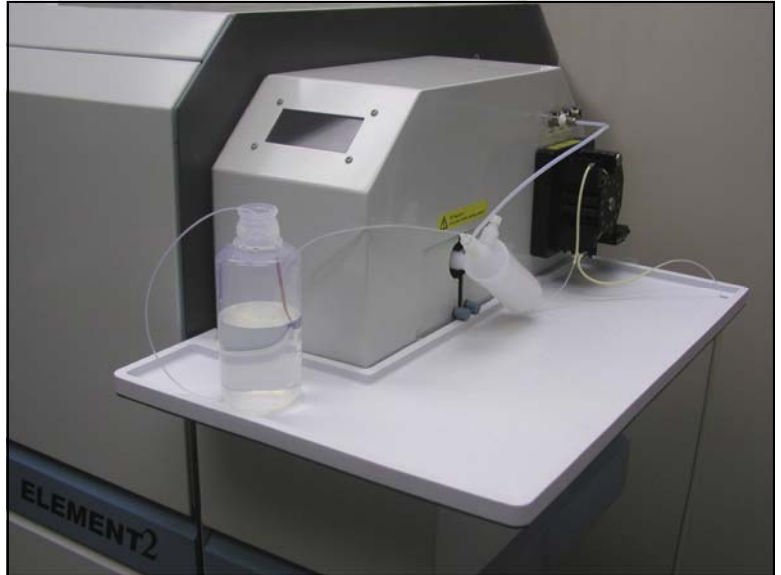
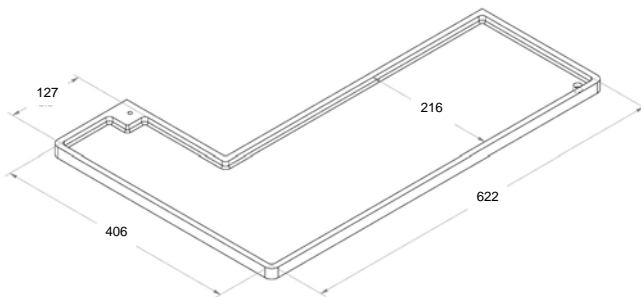


Greater work area makes using the Apex or other sample introduction systems more convenient.

E2-3 Sample Tray for the ThermoFinnigan *ELEMENT2* ICPMS

Increase the work area and make the use of sample introduction systems more convenient.

- Increases sample inlet work area by nearly 3x
- Constructed from chemically resistant polypropylene
- Directly and easily replaces standard *ELEMENT2* tray
- Integrated drain port to channel waste directly to waste container
- Convenient for use with the Apex system



ES-2999-5220 E2-3 Sample Tray for the ThermoFinnigan *ELEMENT2*



Greater work area makes using the Apex or other sample introduction systems more convenient.

Elemental Scientific Inc.
2440 Cuming St
Omaha, NE 68131 USA
www.elementalscientific.com

Phone: 402.991.7800
Fax: 402.991.7799
Email: esi@icpms.com

